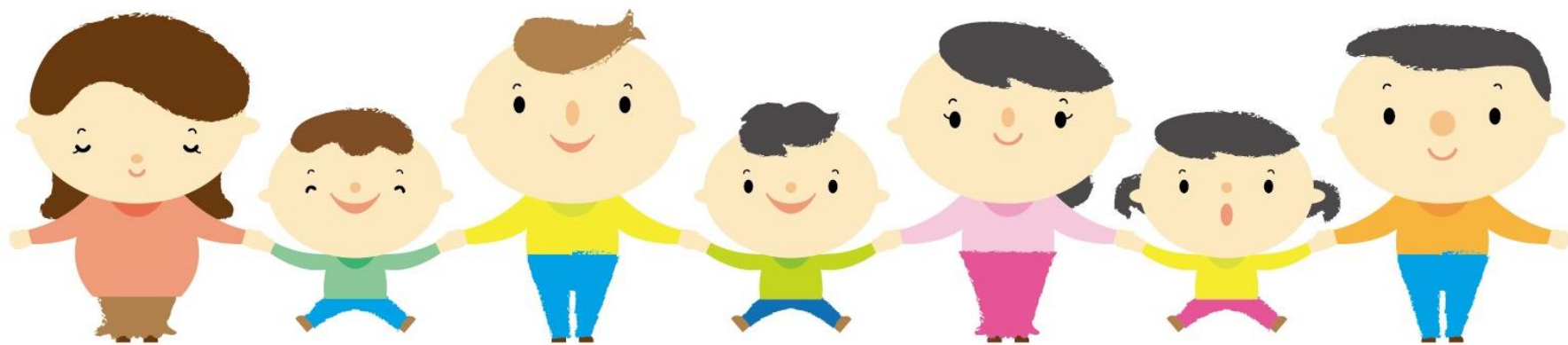


What you need to do if you need Childcare Service in Sapporo



Hana Okada, Bureau for the Future of Children, City of Sapporo

There are 4 types of authorized facilities



From morning to late afternoon
Many children (approx. 90)



From morning to noon
Many children (approx. 150)



From morning to late afternoon
Many children (approx. 70)



From morning to late afternoon
Not many children (approx. 19)
Inside of the building

※Opening and Closing hours differ depending on facilities.

Purpose of each facility differs



Childcare Services



Early Childhood Education

If you need childcare services (authorized facilities) [Daycare] (1)



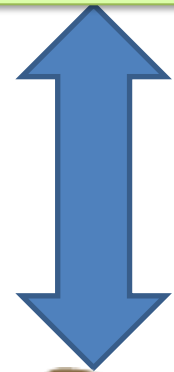
【Qualification for the Application】

- Work (both parents: 64 hours or more per month)
- Pregnancy, Delivery
- Sick, Disabled
- Education, job training (64 hours or more per month) etc.

<What to submit>

- Application for Approval of Education and Childcare Benefits <For No. 2 and No. 3>
- Documents confirming the conditions for application (such as a certificate of employment or a certificate of school registration)

Health Center



If you need childcare services (authorized facilities)

[Daycare] (2)



← Your local Health Center

Ask about your family's situation then score it.

【Information we need】

- Your occupation?
- Where do you work for? How long hours per month?
- How many children do you have?
- Which Day care would you like?

If there are too many applications for a vacancy, the family with the highest score will be admitted.

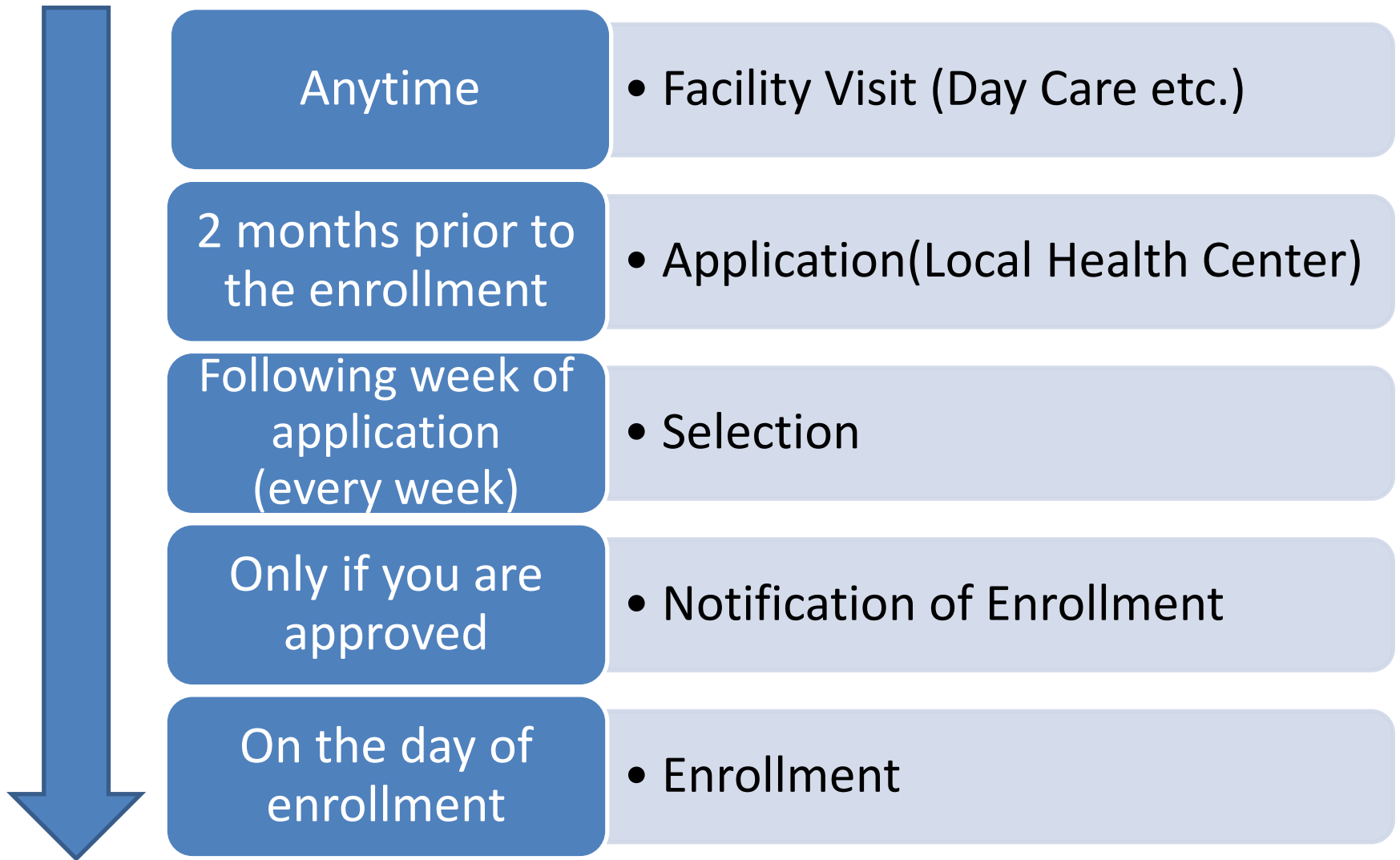
If you need childcare services (authorized facilities)
[Daycare] (3)

Childcare Hours

Classification	Childcare Hours per day	Criterion
Standard Hours	11 hours	If you work 120 hours or more per month
Shorter Hours	8 hours	If you work less than 120 hours per month

If you need childcare services (authorized facilities) [Daycare] (4)

Schedule after Application until Enrollment



If you need childcare services (authorized facilities) [Daycare] (5)

Schedule if your child wants to enroll on April 1st



By around
October

- Facility Visit (Day Care etc.)

November 1st
to 30th

- First Round Application
(Local Health Center)

Early February

- Result of Selection (by post)

Mid-February

- Second Round Application
(Local Health Center)

Early March

- Result of Selection (by post)

How to proceed after your application is approved

Orientation

- For admissions throughout the year, please contact the daycare directly to schedule an orientation.
- If your child is to start daycare from the new school year in April, information about the orientation will be sent to you.



Checking what your child needs and the rules

- Make sure you know what to prepare. (Name tags on everything, whether to bring or rent a futon for the afternoon nap, diapers, etc.)
- Make sure you know what time your child needs to be at daycare, when you should contact them, how to communicate with them (other than in Japanese), etc.

What to do if your child's place at daycare is pending

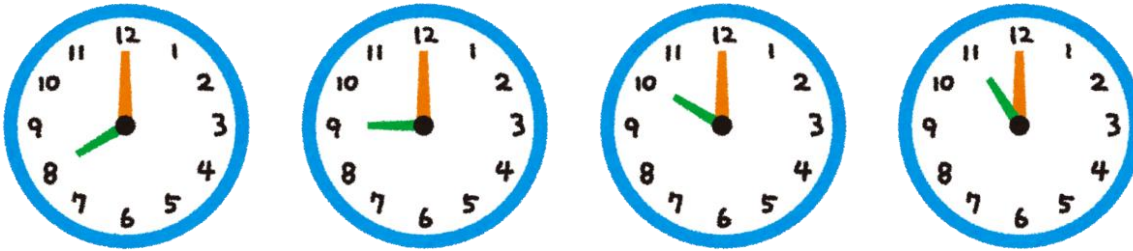
Staying in touch with the day care center

- The daycare you have applied to will continue to keep you informed about the status of your child's place
- If you are applying for a place from the new school year, there will be a second round of processing if your child does not get a place during the first round. However, there are a limited number of places and your child may not be granted a place even, after the second round.

Changing your preferred daycare center

If you wish to change the daycare center your child attends, or if there are changes in your employment or family situation, please contact the Health and Children's Section of your local ward office.

What is Narashi Hoiku (gradual attendance)?



First one hour



Then 2 to 3 hours



Then until lunch time



Then until naptime



Regular hours



If you're coming off maternity leave, you'll be able to return to work full-time right away if you finish the Narashi Hoiku phase before you go back to work!

If you need childcare services (authorized facilities) ~ If you want Early Childhood Education (1) ~



Apply directly to the facility.

-While there is no cost for children 3yrs or older attending daycare, please be aware that additional costs such as the bus fare to the daycare etc. will be incurred.

-Some preschools offer "extended childcare services" to take care of children until the evening. In some cases, the daycare fee for this service is also 0 yen, so please consult with the Child-Rearing Support Office Center. 050-3822-3777



If you need childcare services (authorized facilities) Early Childhood Education (2)

Schedule if your child wants to enroll on April 1st



~ mid
October

- Facility Visit

October 15th
~

- Application Starts

November 1st
~

- Decided & Orientation

April 1st

- Enrollment